

# AXYS WebView Help

## 1 Operation

WebView is software used to display data collected from Watchman500™ modules. WebView enables clients to:

- **Display** messages from a station
- **Graph** data fields from multiple messages and/or stations
- **Export** data to CSV, XML, or Excel format
- **Control** the security of user logins and permissions to access station data
- **Access** messages from a station via web services

### 1.1 Common User Interface Components

The WebView user interface presents information in web pages and collects user inputs via a series of web page forms. Navigation is done through hyperlinks or image buttons. At the top of each page is the common header. Each page has a descriptive title under the common header and contains common image buttons.

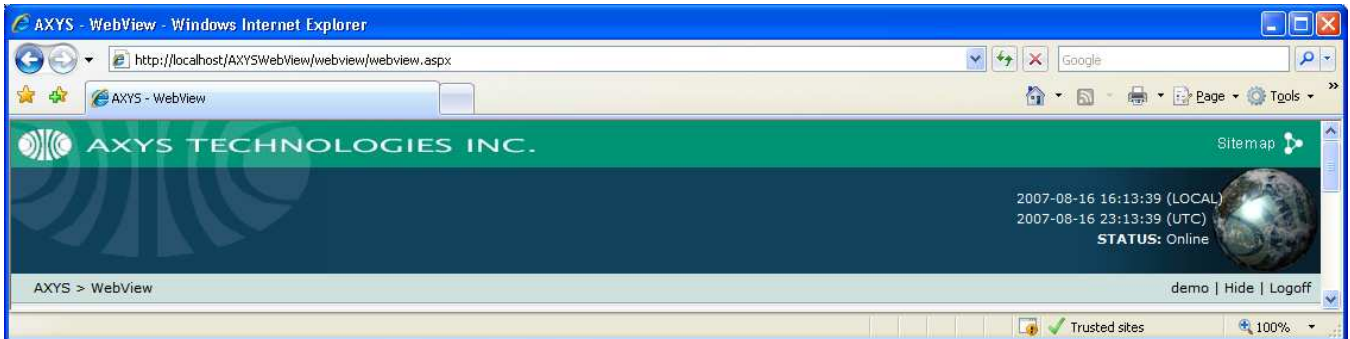


Figure 1: Common Page Header

#### Common Page Header







Item	Description
Sitemap link	Opens the Sitemap page showing the site structure.
YYYY-MM-DD HH:mm:ss (LOCAL)	Current date and time in local time based on computers regional settings.
YYYY-MM-DD HH:mm:ss (UTC)	Coordinated Universal Time (UTC) based on computers regional settings.
Sitemap Path	Shows where you are in the site map structure. For example, AXYS > WebView
Current username	Shows the current username. For example, demo
Hide/Show link	Hides or shows the common header with the exception of the Sitemap Path.
Logoff link	Logoff and return to Logon screen.

## Common Page Types

Item	Description
List	Shows a list of the selected items. Image buttons for List and New are at the top of the page. Image buttons for View, Edit, and Delete are in columns in each row.
New	Shows a data entry form to create a new item. Image button for List are at the top of the page.
View	Shows a read-only view of the item. Image buttons for List, New, and Edit are at the top of the page. Additional related lists are displayed.
Edit	Shows a data entry form to edit an existing item. Image buttons for List, New, and View are at the top of the page.
Data	Shows a page with tabs for related information, query options, and data list.

**Note:** New and Edit pages are restricted to Users belonging to the Administrator Role.

## Common Image Buttons

Item	Description
 List	Open a List page.
 New	Open a New page.
 View	Open a View page.
 Edit	Open an Edit page.
 Delete	Delete an item, a Confirmation dialog appears.
 Data	Open a Data page for viewing message data.


**Note:** New, Edit, and Delete buttons are displayed only if the User belongs to the Administrator Role.

## 1.2 WebView Main Page

The main page consists of three panels:

- The panel to the left will be referred to as the **Tree View**. It is used to navigate Stations and their Messages.
- The top right panel will be referred to as the **Data Panel**. It displays data from message items selected in the tree view.
- The bottom right panel will be referred to as the **Graph Panel**. It displays graphs of data fields from message items.

### Basics:

- Click on a Message to query and display it's data in the Data Panel
- Click on a Message Field Checkbox to select it for graphing; then, click the Graph icon  to query for the data and display the graph in the Graph Panel.

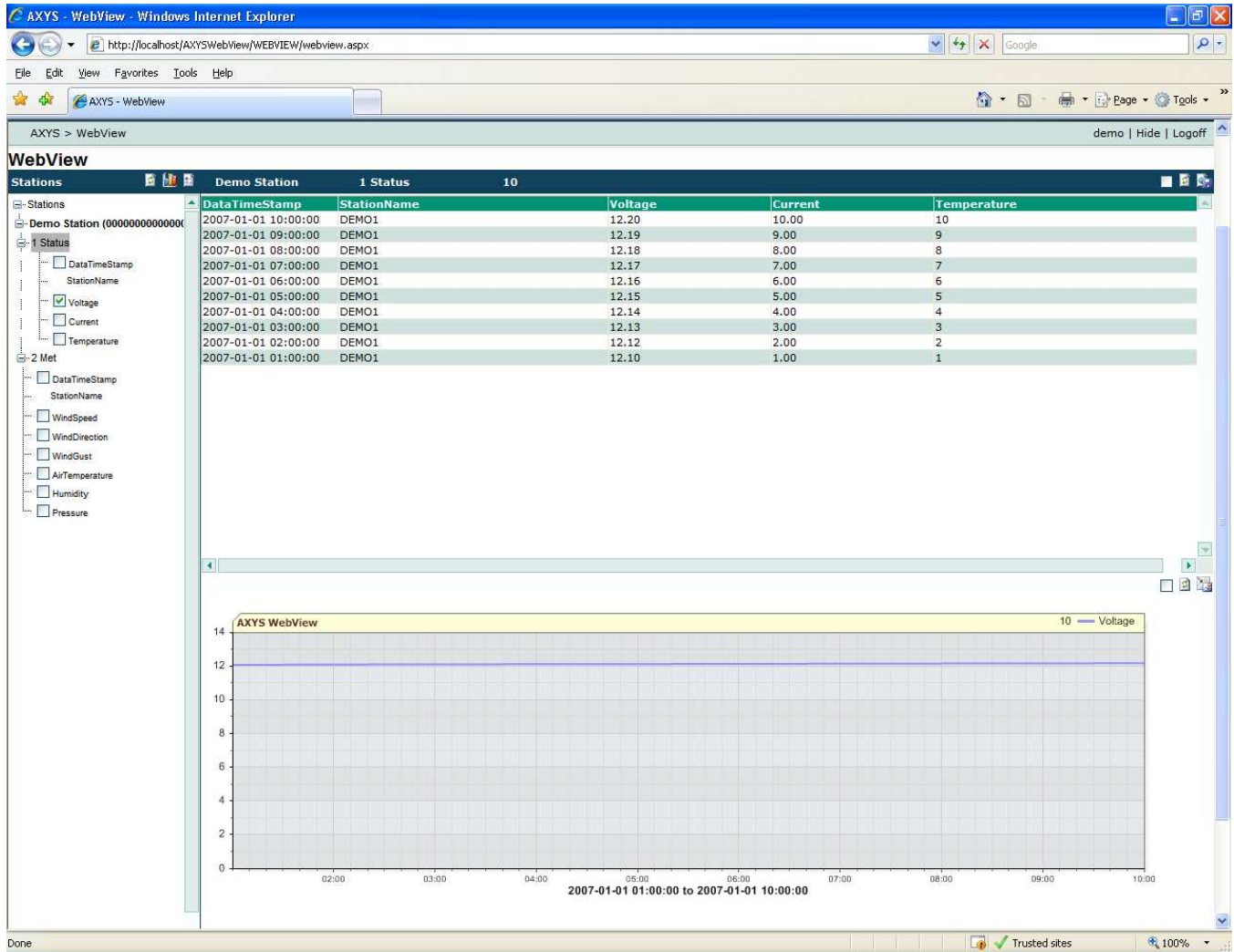







Figure 2: WebView main window



## Tree View Panel

Item	Description
Stations link	Link to Station List page.
 Refresh Tree View	Refreshes the contents of the Tree View.
 Create Graph	<b>Creates a graph in the Graph Panel using the checked data fields.</b>
 Options...	Opens the modal Options form.
Stations tree view	Displays Stations the user has permission to view. Listed by station name in ascending alphanumeric order.
Station item	Station name followed by the serial number in brackets. Tooltip displays Station Name, Serial Number and Description. No actions.
Message item	Message number followed by the message name. Tooltip displays Message Number and Name. <b>Single-click displays the message data in the Data Panel.</b> Listed by message number in ascending numeric order.
Data field item	Message data field name in either short or verbose format. Tooltip displays verbose name and data type. Checkbox indicates it is able to be graphed. Note: String values cannot be graphed. <b>Checking the checkbox selects the data field for graphing.</b> Listed by column order in database view or table.

## Data Panel

Item	Description
Auto-Refresh checkbox	Starts the timer to refresh the Data Panel contents. Refresh interval is set in the Options form.
 Manual Refresh	Manually refreshes the Data Panel contents.
 Download Data...	Opens the Export form to download the Data Panel contents in CSV, CUSTOM, XLS, TSV, or XML format.
Message list	List of messages with alternating row color. Listed by DateTimeStamp field in descending order. Data field name in either short of verbose format. DateTimeStamp formatted as YYYY-MM-DD HH:mm:ss If the message contains data field names with Latitude and Longitude an extra column called Google will be added with a Map link. Clicking the link will show that coordinate on a Google Map.

## Graph Panel

Item	Description
Auto-Refresh checkbox	Starts the timer to refresh the Graph Panel contents. Refresh interval is set in the Options form.
 Manual Refresh	Manually refreshes the Graph Panel contents.
 Pop-up Graph	Opens the graph image in a new browser window.

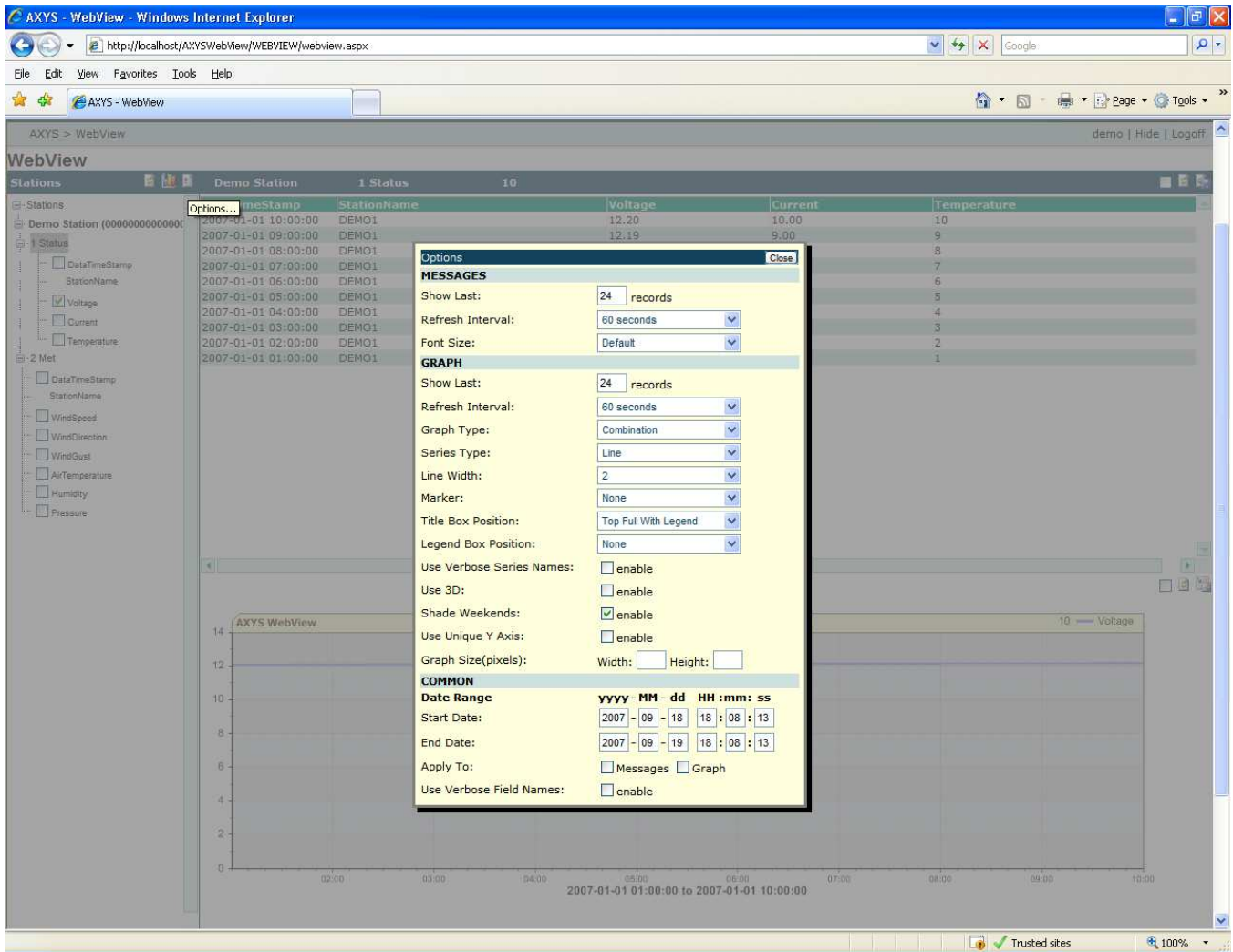


Figure 3: WebView Options Form

### Options Form

Item	Description
Close	Closes the form. This does not cause an automatic refresh of the panels.

### Options Form - MESSAGES

Item	Description
Show Last	Number of records to display in Data Panel.
Refresh Interval	Number of seconds between automatic refresh in Data Panel.
Font Size	Font size of Message list in Data Panel.

## Options Form - GRAPH

Item	Description
Show Last	Number of records to display in Graph data series.
Refresh Interval	Number of seconds between automatic refresh in Graph Panel.
Graph Type	Type of base graph. Options: Bubble, Combination, Combination Horizontal, Combination Side by Side, Donut, Donuts, Financial, Gantt, Gauges, Pie, Pies, Radar, Radars, Scatter.
Series Type	Type of series to display on the graph. Options: Area Line, Area Line (Smooth), Bar, Bubble, Column, Cylinder, Line, Line (Smooth), Marker.
Line Width	Width of lines drawn on graph when series is a Line type.
Marker	Style of Marker displayed on graph. Options: None, Square, Triangle, Circle, Diamond, FourPointStar, FivePointStar, SixPointStar, SevenPointStar.  If a Marker Series Type is selected you must select a Marker style.  The Marker can be displayed on Line and other Series Types to identify exactly where the data point is.
Title Box Position	Shows default title and information about the Graph. Options: None, Top Full With Legend, Top Full, Top Center, Top Right, Top Left.
Legend Box Position	Shows the Legend Box with information about the Series. Options: None, Bottom Middle, Right Top, Right Middle, Right Bottom.
Use Verbose Series Names	Series identifiers use Station Name, Message Name, and Data Field name instead of Data Field name.
Use 3D	Draws the graph in 3D.
Shade Weekends	Background shading added to Saturdays and Sundays.
Use Unique Y Axis	Adds a unique Y Axis for each Series drawn on the Graph.  The default uses a 'smart scale' to adjust the Y Axis after all the Series have been added to the graph.
Graph Size (pixels)	Enter a custom Width and Height (in pixels) for the Graph image.  Overrides the default using the browser window size to create a Graph image that fits in the Graph Panel.

## Options Form - COMMON

Item	Description
Start Date and End Date	Date Range to apply to Messages or Series.  Defaults boxes to last 24 hours.
Apply To	Overrides the default Show Last and uses the Date Range  Can be applied to Messages and/or Graph.
Use Verbose Field Names	The tree view and message list will ignore the 'smart field name' logic and display the full verbose field name.  Logic looks for a unit descriptor in round brackets and a header in N000S000P000 format then takes the middle portion as the field name.